



APOLLO<sup>®</sup>  
IMPLANT COMPONENTS

SmartBridge.  
Your digital way.

# Your digital way.

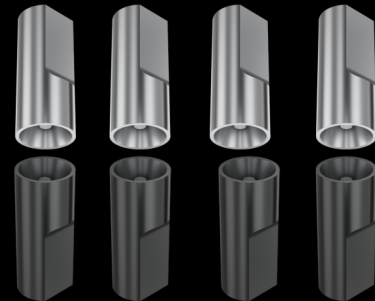
▶ smartflag  
by APOLLO

intraoral scanning



Scanbody Multi-unit

lab scanning



## Your choice



**TYTAN**

Ti6Al4V ELI

**GOLD**

Ti6Al4V ELI

## We deliver



## Our warranty



5-YEAR WARRANTY

SCREW RETAINED:

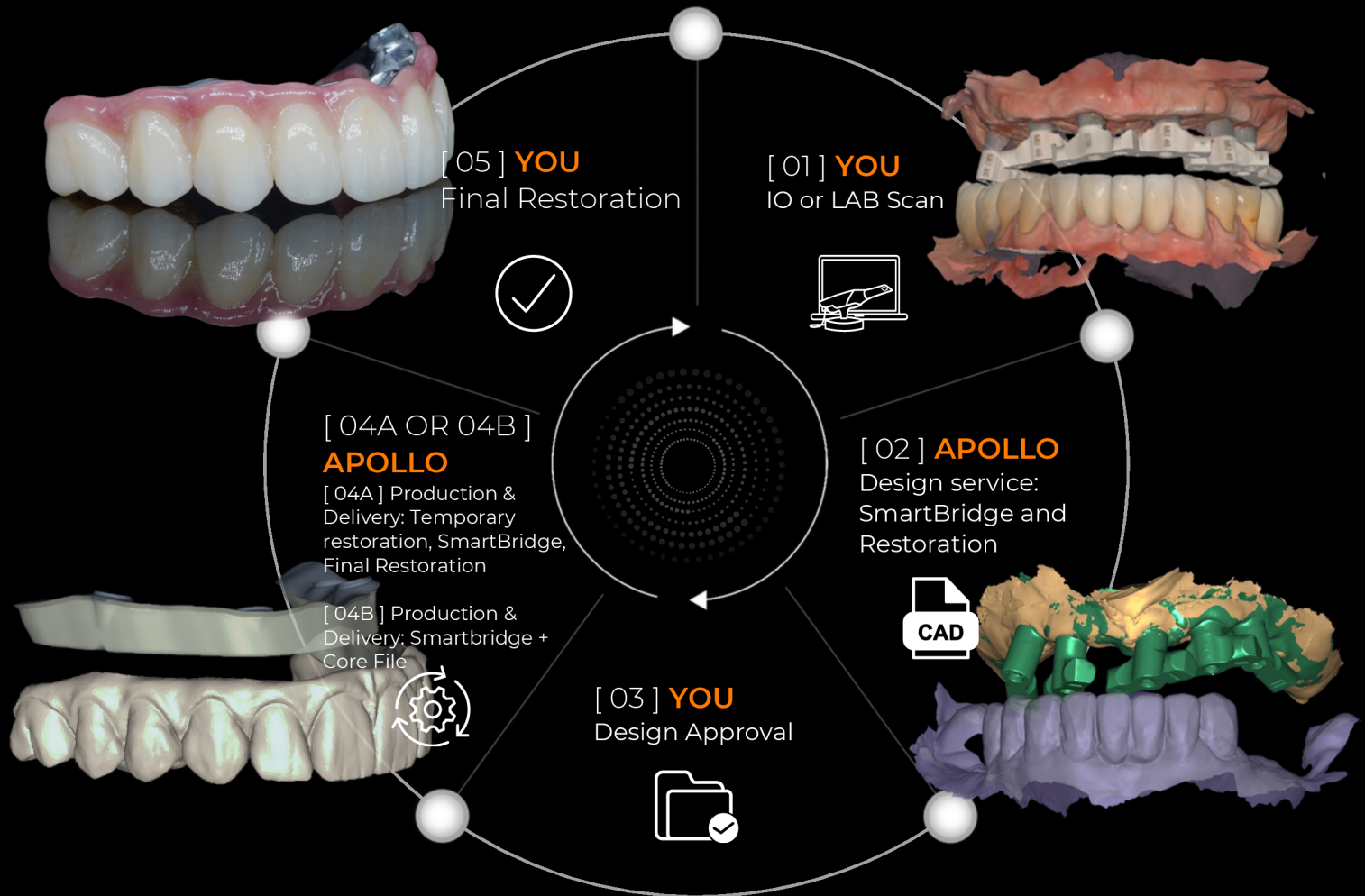
Structures, Supra-Structures,  
Implant Bridges and Implant Bars



# SmartBridge.

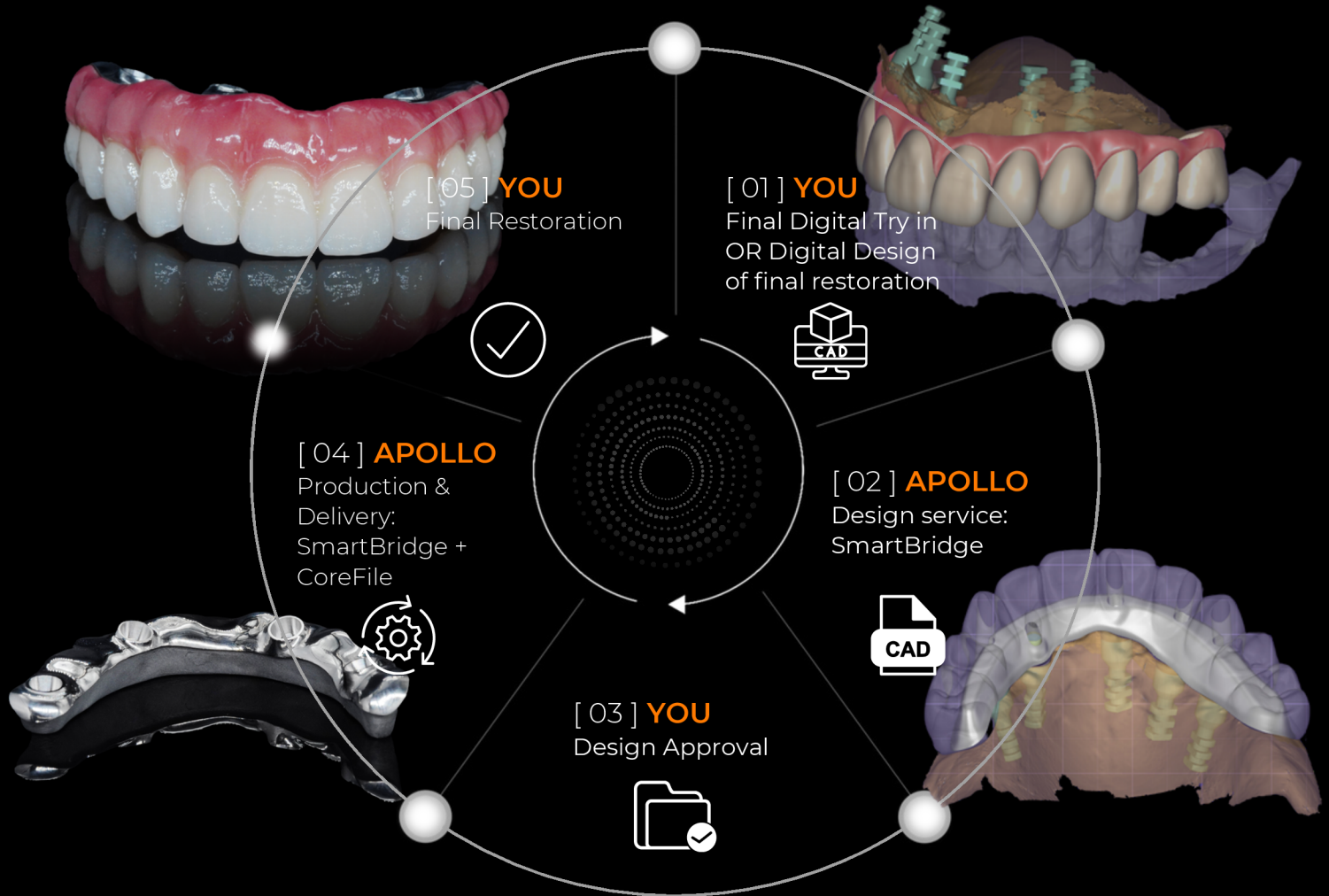
**You scan.**

**We design & produce.**



# SmartBridge.

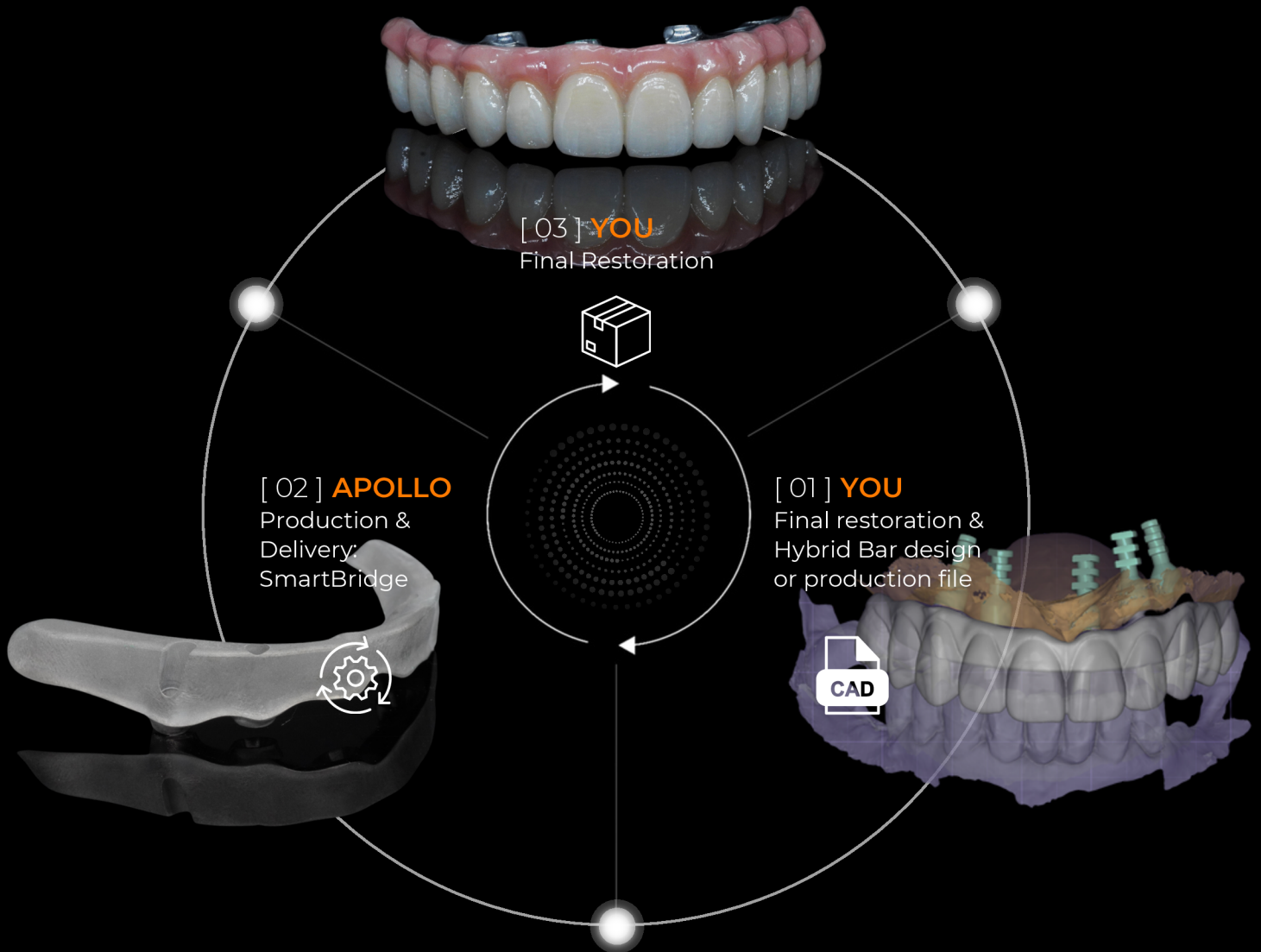
**You design.**  
**We produce.**





# SmartBridge.

## Just mill it.





work smart

discover more



Sales department

#### Contact details

Sales department  
+48 882 878 707

Support  
+48 42 225 29 29

Konopna 16  
95-200 Pabianice  
POLAND

#### Certificates

✓ EN ISO 13485:2016

✓ CE 0197

✓ MDR 2017/745

@apollocomponents



apollo\_implant\_components